

CRYOGENIC VALVES



G.M. Gun Metal
S.S. Stainless Steel
M.B. Manganese Bronze

FOR GAS
SERVICE

0
35

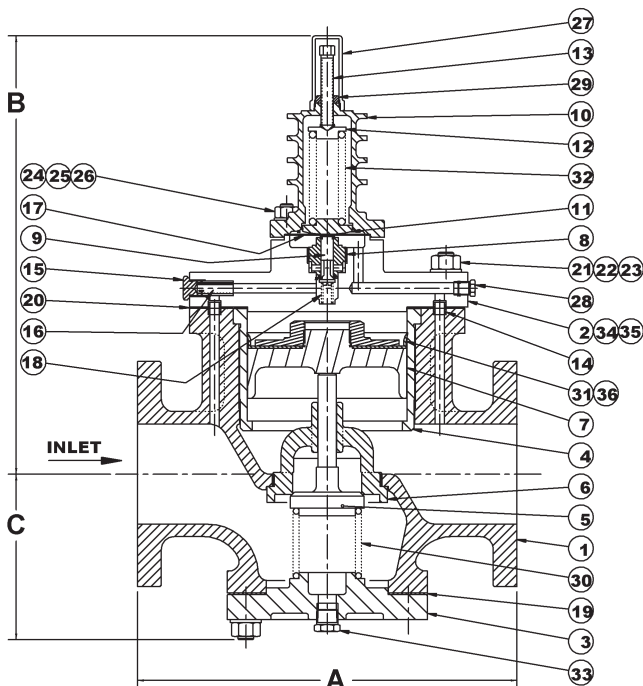
INDEX OF ILLUSTRATED VALVES & EQUIVALENTS IN VARIOUS MATERIALS

MANUFACTURED IN MATERIALS TO MEET INTERNATIONAL STANDARDS

CRYOGENIC PILOT OPERATED PRESSURE REDUCING VALVES	End Connections	Body & Cover	Main Seat material	Main Valve Material	Pilot Seat & Disc	Diaphragm	Spring	Rating	
								Pressure kPa psi	Temp °C
7941ACR GUN METAL	ANSI 150	GM	SS	GM	SS	Nickel Silver	SS	1551 250	-20°C to 190°C
7943ACR GUN METAL	ANSI 300	GM	SS	GM	SS	Nickel Silver	SS	3450 500	-20°C to 190°C

SIZE (MM)	15	20	25	32	40	50	65	80	100	125	150
DIMENSIONS (MM)											
A	162	162	162	190	203	222	305	298	385	441	441
B	245	245	248	295	295	318	416	416	445	560	560
C	60	60	60	86	86	86	121	121	168	202	202
WEIGHT (KGS)	6.0	6.0	7.1	8.0	9.0	15.0	31.0	46.5			
KVS - VALUE	1.3	2.7	5.2	8.1	10.7	19.4	27	42	68	119	171
CV - VALUE	1.5	3.1	6.0	9.4	12.4	22.4	31	48	79	138	198

Pilot operated, single port, bronze body and bolted cover, renewable stainless steel pilot valve disc, PTFE seat, stainless steel spring, nickel silver diaphragm, bronze piston fitted with PTFE rings, renewable bronze main valve, steel control spring. Ends flanged ANSI 150# (7941A) ANSI 300# (7943A). Suitable for oxygen service.



Parts List.

- | | |
|------------------------------|---------------------------|
| 1. Body | 19. Gasket |
| 2. Cover | 20. Gasket |
| 3. Bottom Plate | 21. Stud |
| 4. Liner | 22. Hex Nut |
| 5. Valve | 23. Washer |
| 6. Seat | 24. Hex Stud |
| 7. Plunger | 25. Hex Nut |
| 8. Pilot Valve Seat assembly | 26. Washer |
| 9. Pilot Valve | 27. Adjusting Screw Cover |
| 10. Spring Cover | 28. Hex. HeadPlug |
| 11. Diaphragm Pad | 29. Valve Spring |
| 12. Top Spring Pad | 30. Cup Washer |
| 13. Adjusting Screw | 31. Spring |
| 14. Ferrule | 32. Hex Head Plug |
| 15. Strainer Plug | 33. Name Plate |
| 16. Screen | 34. Drive Pin |
| 17. Diaphragm | 35. Disc Nut |
| 18. Spring | |

Mack Valves Head Office
 30 Burgess Road
 BAYSWATER, VIC 3153
 Tel: (03) 9737 5200
 Fax: (03) 9720 1344
 Email: enquiries@mackvalves.com.au

Mack Valves NSW Office
 Unit 9/9-11 Abel Street
 Penrith NSW 2750
 Tel: (02) 4722 6033
 Fax: (02) 4722 6144
 Email: enquiries.nsw@mackvalves.com.au

Mack Valves SA/WA Office
 204 Prospect Road
 Prospect SA 5082
 Tel: (08) 8269 6477
 Fax: (08) 8344 5934
 Email: enquiries.sa@mackvalves.com.au