



SOLENOID VALVES

S
4

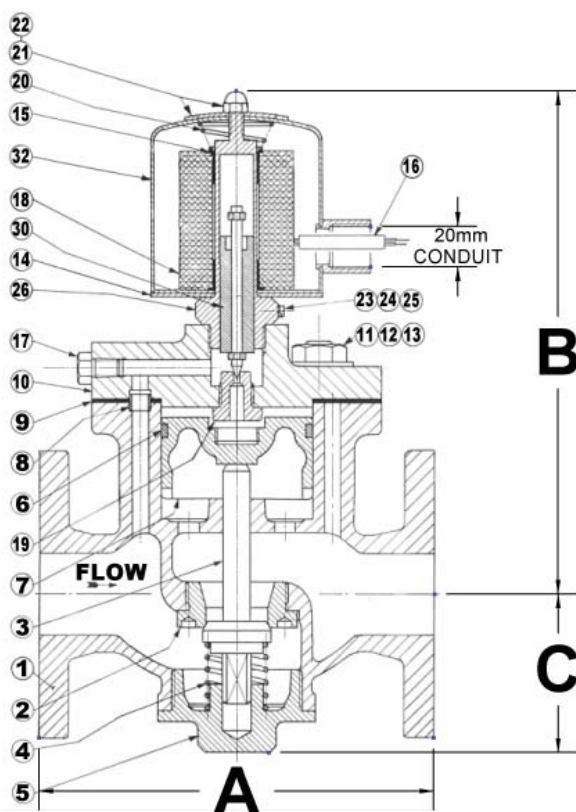
G.M. Gun Metal
S.S. Stainless Steel
M.B. Manganese Bronze

C.I. Cast Iron
C.S. Cast Steel

INDEX OF ILLUSTRATED VALVES & EQUIVALENTS IN VARIOUS MATERIALS

PACKLESS STEAM SOLENOID VALVES	End Connections	Inlet Flange	Outlet Flange	Body & Spring Cover	Screwed Cover	Bolted Cover	Seat	Disc	Spindle	Spring	Rating		
											Working pressure	Max Temp	Working pressure at max temp.
											kPa psi	°C °F	kPa psi
NFSGM GUN METAL	Table H			GM		32-100mm	SS		SS	SS	1035 150	190 374	1725 250

SIZE (MM)	15	20	25	32	40	50	65	80	100
DIMENSIONS (MM)									
A	152	149	149	191	191	222	299	299	391
B	197	797	197	232	232	261	294	294	289
C	60	60	60	72	72	78	122	122	165



PARTS LIST.

- | | |
|--------------------|-------------------------|
| 1. Body | 17. Hex Head Plug Solid |
| 2. Main Valve Seat | 18. Coil |
| 3. Main Valve | 19. Pilot Valve Seat |
| 4. Valve Spring | 20. Spring |
| 5. Bottom Cap | 21. D. Nut |
| 6. Piston Ring | 22. Nameplate |
| 7. Piston | 23. Screw |
| 8. Ferrule | 24. Washer |
| 9. Gasket | 25. Washer |
| 10. Bonnet | 26. Cover Assembly |
| 11. Bolt | 30. Spindle Assembly |
| 12. Hex Nut | 35. Cover |
| 13. Washer | |
| 14. Cover Adaptor | |
| 15. Thimble | |
| 16. Sleeve | |

Mack Valves Head Office
30 Burgess Road
BAYSWATER, VIC 3153
Tel: (03) 9737 5200
Fax: (03) 9720 1344
Email: enquiries@mackvalves.com.au

Mack Valves NSW Office
Unit 9/9-11 Abel Street
Penrith NSW 2750
Tel: (02) 4722 6033
Fax: (02) 4722 6144
Email: enquiries.nsw@mackvalves.com.au

Mack Valves SA Office
204 Prospect Road
Prospect SA 5082
Tel: (08) 8269 6477
Fax: (08) 8344 5934
Email: enquiries.sa@mackvalves.com.au