

DIAPHRAGM VALVES



G.M. Gun Metal
S.S. Stainless Steel
M.B. Manganese Bronze

C.I. Cast Iron
C.S. Cast Steel

M
11

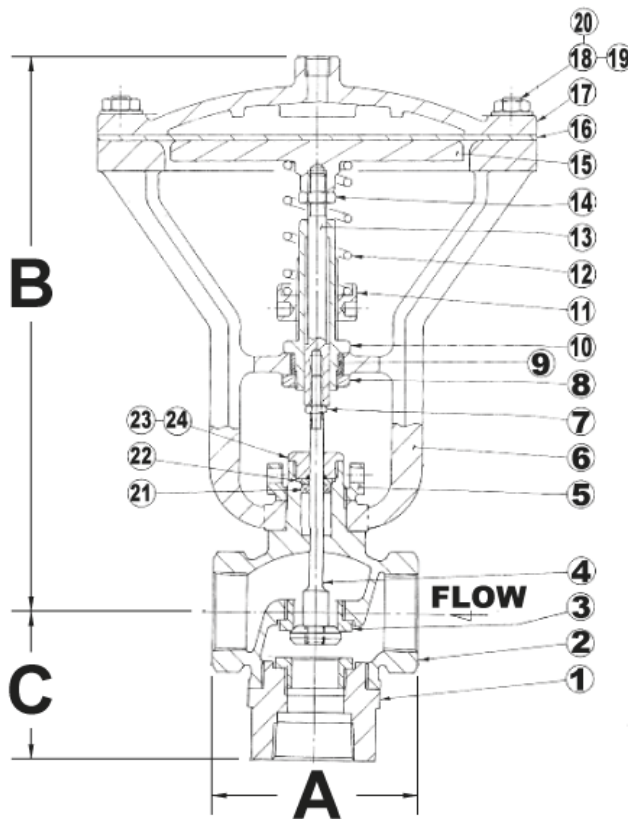
INDEX OF ILLUSTRATED VALVES & EQUIVALENTS IN VARIOUS MATERIALS

Insert
Photo
Here

DIAPHRAGM ACTUATED VALVES	End Connections	Body & Bonnet	Screwed Bonnet	Bolted Bonnet	Seat Material	Disc	Diaphragm	Normally Open Direct acting	Normally Closed Reverse acting	Three Way	Rating		
											Working pressure	Max Temp	Working pressure at max temp.
											kPa psi	°C °F	kPa psi
8338 GUN METAL	Screwed B.S.P.T Female	GM	✓		SS	SS	Neoprene			✓	1720 249	190 374	1720 249

SIZE (MM)	15	20	25	32	40	50
DIMENSIONS (MM)						
A	73	86	114	114	140	165
B	308	321	337	330	340	359
Ø C	51	48	60	70	73	89

Air or water operated, three way type, bronze body and screwed bonnet, renewable stainless steel seat and disc, gland packing PTFE "U" ring and viton "O" ring, ends screwed BSP Female, 150mm ø neoprene diaphragm, aluminium diaphragm housing with 08mm BSP Female connection.
 Valve Action: Maximum signal pressure 1720 kPa



PARTS LIST.

- | | |
|---------------------|-------------------------|
| 1. Cap | 13. Push Rod |
| 2. Body | 14. Locknut |
| 3. Seat | 15. Diaphragm Pad |
| 4. Spindle | 16. Diaphragm |
| 5. Spider Clamp Nut | 17. Top Diaphragm Cover |
| 6. Spider | 18. Stud |
| 7. Locknut | 19. Hex Nut |
| 8. Locknut | 20. Washer |
| 9. Bush | 21. Packing |
| 10. Rod Guide | 22. Gland |
| 11. Spring Pad | 23. Gland Washer |
| 12. Spring | 24. Gland Nut |

NOTE: MAX TEMPERATURE OF CONTROL
 LINE = 93°C

MAX TEMPERATURE OF MEDIUM AS PER
 CHART.

Mack Valves Head Office
 30 Burgess Road
 BAYSWATER, VIC 3153
 Tel: (03) 9737 5200
 Fax: (03) 9720 1344
 Email: enquiries@mackvalves.com.au

Mack Valves NSW Office
 Unit 9/9-11 Abel Street
 Penrith NSW 2750
 Tel: (02) 4722 6033
 Fax: (02) 4722 6144
 Email: enquiries.nsw@mackvalves.com.au

Mack Valves SA Office
 204 Prospect Road
 Prospect SA 5082
 Tel: (08) 8269 6477
 Fax: (08) 8344 5934
 Email: enquiries.sa@mackvalves.com.au