



CRYOGENIC VALVES

G.M. Gun Metal
S.S. Stainless Steel
M.B. Manganese Bronze

**FOR GAS &
 CRYOGENIC SERVICE**

**0
 28**

INDEX OF ILLUSTRATED VALVES & EQUIVALENTS IN VARIOUS MATERIALS

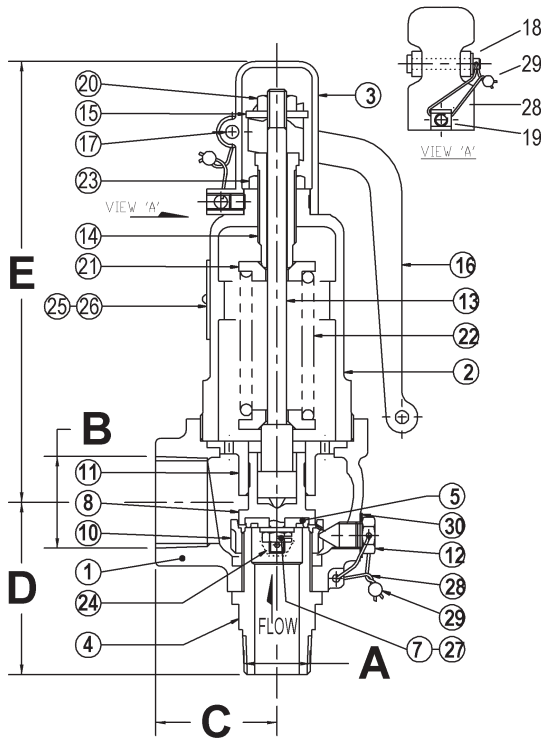
MANUFACTURED IN MATERIALS TO MEET INTERNATIONAL STANDARDS



CRYOGENIC HIGH LIFT PRESSURE SAFETY VALVES	End Connections	Body	Screwed Cover	Bolted Cover	Seat Material	Disc	Spring	Rating	
								Pressure kPa psi	Temp °C
7628CR GUN METAL	Screwed B.S.P.T	GM	✓		MB	P.T.F.E	SS	15mm - 7130 kPa 1034 psi 20mm - 7130 kPa 1034 psi 25mm - 5500 kPa 797 psi 32mm - 4180 kPa 606 psi 40mm - 4620 kPa 670 psi 50mm - 5588 kPa 810 psi	-196°C to +150°C
7628ACR GUN METAL	Screwed N.P.T	GM	✓		MB	P.T.F.E	SS		-196°C to +150°C
7608CR STAINLESS STEEL	Screwed B.S.P.T	SS	✓		SS	P.T.F.E	SS		-196°C to +150°C
7608ACR STAINLESS STEEL	Screwed N.P.T	SS	✓		SS	P.T.F.E	SS		-196°C to +150°C
7638CR GUN METAL	Screwed B.S.P.T	GM	✓		MB	P.T.F.E	SS		-196°C to +150°C
7638ACR GUN METAL	Screwed N.P.T	Gm	✓		MB	P.T.F.E	SS		-196°C to +150°C

SIZE (MM)	15	20	25	32	40	50
DIMENSIONS (MM)						
C	38	47.6	57	57	73	95
D	59	63.5	86	90.5	108	130
E	141	161	218	218	273	325
WEIGHT (KGS)	1.5	2.6	4.8	5	9	20

Enclosed spring type, fitted with easing gear, lock-up top, spindle and seat, PTFE disc, stainless steel spring, blow down adjusting ring. Bottom inlet Male - Side discharge Female.



Parts List.

- | | |
|----------------------|----------------------|
| 1. Body | 16. Cap |
| 2. Spring Cover | 17. Gasket |
| 3. Seat | 18. Spring |
| 4. Disc Holder | 19. Name Plate |
| 5. Disc | 20. Drive Pin |
| 6. Disc Washer | 21. Cap Gasket |
| 7. Split Nut/Locknut | 22. Sleeve |
| 8. Blowdown Ring | 23. Lockscrew Gasket |
| 9. Guide Plate | 24. Cotter Pin |
| 10. Spindle | 25. Lead Seal |
| 11. Spring Pad | 26. Tie Wire |
| 12. Lockscrew | 27. Stud |
| 13. Plug | 28. Nut |
| 14. Adjusting Screw | 29. Washer |
| 15. Locknut | 30. Retaining Ring |

Mack Valves Head Office
 30 Burgess Road
 BAYSWATER, VIC 3153
 Tel: (03) 9737 5200
 Fax: (03) 9720 1344
 Email: enquiries@mackvalves.com.au

Mack Valves NSW Office
 Unit 9/9-11 Abel Street
 Penrith NSW 2750
 Tel: (02) 4722 6033
 Fax: (02) 4722 6144
 Email: enquiries.nsw@mackvalves.com.au

Mack Valves SA/WA Office
 204 Prospect Road
 Prospect SA 5082
 Tel: (08) 8269 6477
 Fax: (08) 8344 5934
 Email: enquiries.sa@mackvalves.com.au